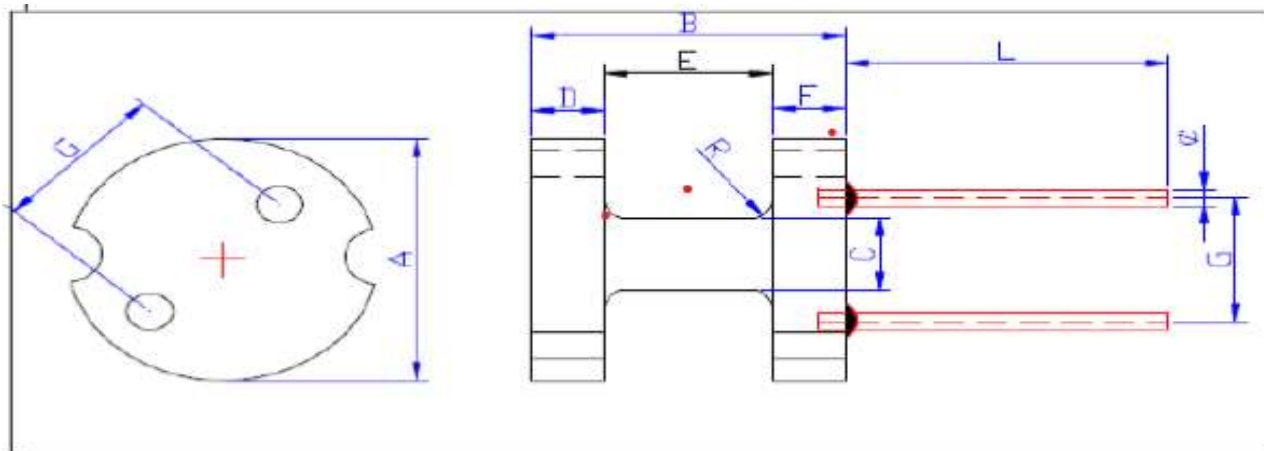


Technical Data Sheet RoHS Compliant Product

DR10X12 Cores, With Pin & With Cut, SFP40T, MnZn



Product Specifications:

	Parameter	Symbol	Unit	Value	
Dimensions	A	-	mm	10.0 ± 0.25	
	B	-	mm	12.0 ± 0.30	
	C	-	mm	5.0 ± 0.25	
	D	-	mm	2.5 ± 0.15	
	E	-	mm	4.0 ± 0.4	
	F	-	mm	2.5 ± 0.15	
	G	-	mm	5.0 ± 0.3	
	L	-	mm	12 ± 0.5	AL Value in nH
	R	-	mm	Max 0.2	38.76nH ± 15% (32.95 ~ 44.57)
	∅	-	mm	0.8 ± 0.05	
Appx. Weight/Piece	Weight	W	gm	-	
Test Conditions	Frequency	f	kHz	1	Inductance (L) Value in mH
	Voltage	V	mV	1000	3.5mH ± 15% (2.975 ~ 4.025)
	No of Turns	N	Numbers	300.5	
	Measuring Temperature	T	°C	25 ± 3	

Material Grade	Initial Permeability (μi)	AL Value (nH)	PV (W/Set)
SFP40T	800 ±20%	38.76 ±15%	